

**PURSUING STABILITY IN VOLATILE MARKETS**

**Permanent Portfolio®**

.....

3<sup>rd</sup> QUARTER 2018

Class A: PRPDX | Class C: PRPHX | Class I: PRPFX

## AVERAGE ANNUAL TOTAL RETURNS

(as of September 30, 2018)	YTD	1 Year	5 Years	10 Years	15 Years	Inception
Class A (Load)	-6.03%	-3.50%	-	-	-	2.77%
Class A (No Load)	-1.09%	1.58%	-	-	-	5.04%
Class C (Load)	-2.62%	-1.14%	-	-	-	4.27%
Class C (No Load)	-1.64%	.85%	-	-	-	4.27%
Class I	-.90%	1.85%	2.55%	4.80%	6.56%	5.98%
Standard & Poor's 500 Composite Stock Index	10.56%	17.91%	13.95%	11.97%	9.65%	11.59%

Expense Ratios	Class A	Class C	Class I
Gross Expense Ratio	1.07%	1.82%	.82%

For the year ended January 31, 2018, as stated in the Fund's statutory Prospectus, dated May 31, 2018. Inception Dates: Class A and Class C - May 31, 2016. Class I - December 1, 1982.

*Performance data quoted represents past performance and does not guarantee future results. The investment return and principal value of an investment will fluctuate so that an investor's shares, when redeemed, may be worth more or less than their original cost. Investment performance, current to the most recent month-end, may be lower or higher than the performance quoted. It can be obtained by calling (800) 531-5142. Performance data shown with load reflects the Class A shares maximum sales charge of 5.00% and the Class C shares maximum deferred sales charge of 1.00%. Performance data shown as no load does not reflect the current maximum sales charges. Had the sales charge been included, the fund's returns would be lower. All results are historical and assume the reinvestment of dividends and capital gains.*

## CHARACTERISTICS

Net Assets (M)	\$2,257.85 (as of 09/30/2018)	Standard & Poor's 500 Composite Stock Index is a market-capitalization weighted index of common stocks and represents an unmanaged portfolio. Returns shown for this index reflect reinvested interest and dividends as applicable, but do not reflect a deduction for fees, expenses or taxes. An index is unmanaged and is not subject to fees and expenses. You cannot invest directly in an index.
Inception Date	December 1, 1982	
Alpha <sup>1</sup>	2.58	
Beta <sup>1</sup>	.30	
Correlation <sup>1</sup>	.55	
Standard Deviation <sup>1</sup>	8.00	

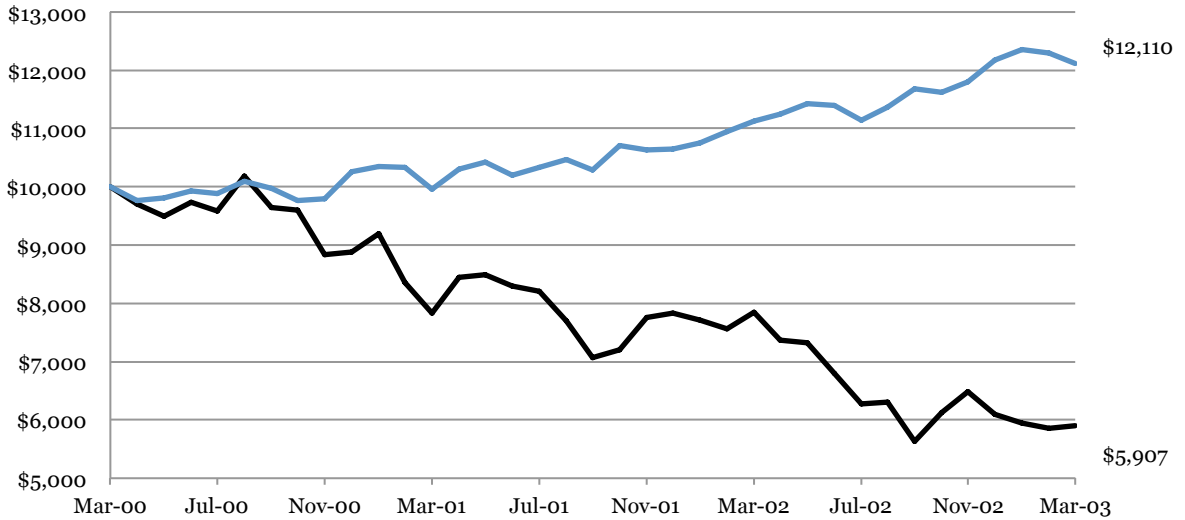
Charts on pages 3 - 5 illustrate the performance of \$10,000 invested in Permanent Portfolio Class I shares, over the time periods noted, compared to performance of Standard & Poor's 500 Composite Stock Index over the same periods. They do not reflect the deduction of taxes an investor would pay on fund distributions or on the redemption of fund shares. Returns for the fund reflect reinvestment of all dividends and distributions and deduction of all fees and expenses.

Data Sources: Bloomberg and Zephyr StyleADVISOR. Manager Returns supplied by: Morningstar, Inc. Zephyr StyleADVISOR uses returns-based style analysis to determine managers' investment styles and to create a style benchmark for evaluating manager performance. StyleADVISOR also tests for style consistency. Zephyr StyleADVISOR is a third party vendor whose data is believed to be accurate, but cannot be guaranteed. **Past performance does not guarantee future results.**

■ Permanent Portfolio ■ Standard & Poor's 500 Composite Stock Index

**DOT-COM BUST**

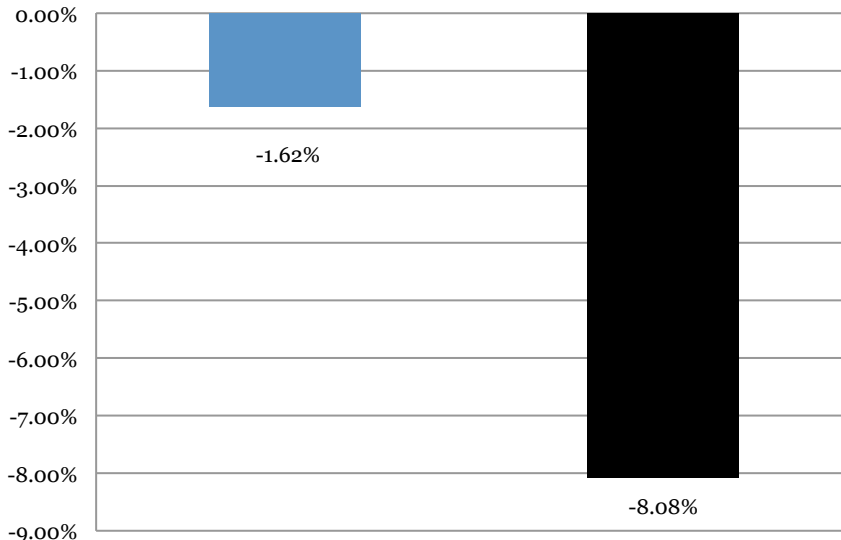
April 1, 2000 - March 31, 2003



The dot-com mania came crashing down as basics such as sustainable business models and actual earnings started to matter again. The receding tide revealed shady accounting practices across companies in the broader economy and the September 11 terrorist attacks sent the markets into a three-year bear period.

**9/11 ATTACKS ON AMERICA**

September 1, 2001 - September 30, 2001

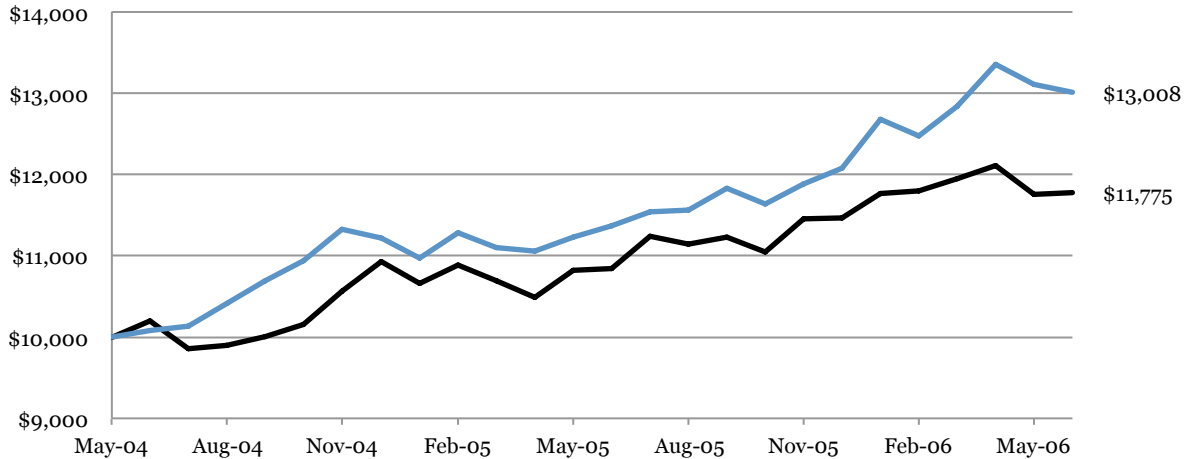


The attacks caused the market to drop sharply and the 2001 recession to deepen.

■ Permanent Portfolio ■ Standard & Poor's 500 Composite Stock Index

**17 INTEREST RATE HIKES**

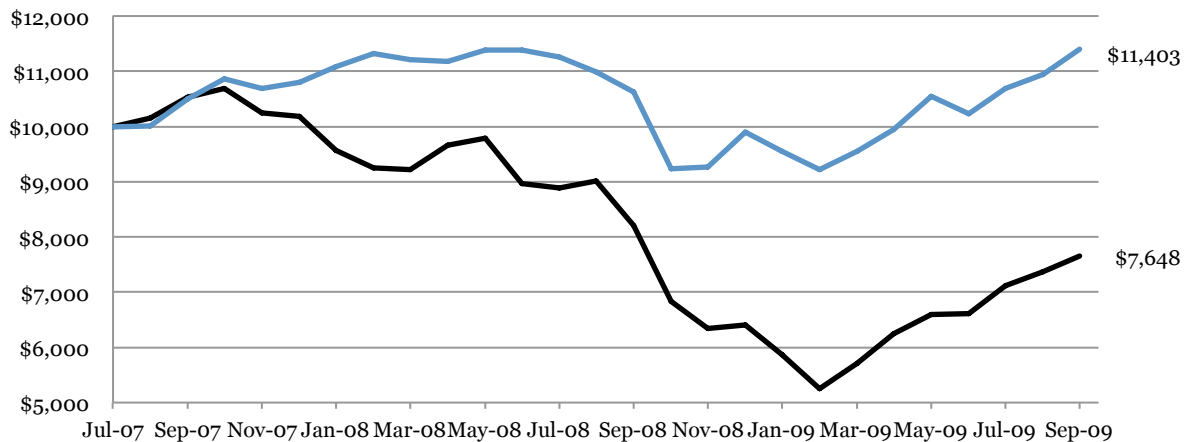
June 1, 2004 - June 30, 2006



The Federal Reserve reversed loose monetary conditions following the dot-com burst and the September 11 attacks from a low of 1.00% in mid-2003 to a peak of 5.25% in mid-2006. Fear of economic dislocation and inflation – Hurricane Katrina, first signs of a housing bubble, beginning of the credit crisis and continuation of the Iran and Afghanistan wars.

**CREDIT CRISIS**

August 1, 2007 - September 30, 2009



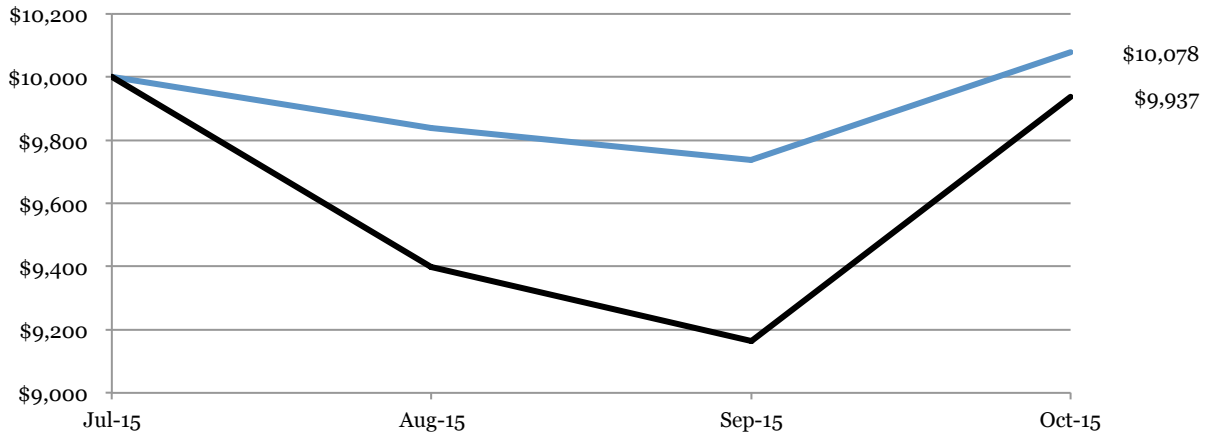
Years of cheap money, excess liquidity, over borrowing and sloppy securitizations came to a head and plunged the markets into their worst period since the Great Depression. The financial landscape changed in ways previously unimaginable and trillions of dollars of wealth disappeared. The credit bubble popped and the world turned upside down. High yield spreads over Treasuries went from approximately 2.5% to a peak of almost 20%. In March 2008, the Federal Reserve provided Bear Stearns an emergency loan. By September 2008, both Bear Stearns and Lehman Brothers were non-operational.

Bear Stearns and Lehman Brothers are no longer publicly traded. As of September 30, 2018, Permanent Portfolio's holdings were 0%. The fund's holdings and sector allocations are subject to change at any time and should not be considered recommendations to buy or sell any security.

■ Permanent Portfolio ■ Standard & Poor's 500 Composite Stock Index

**CHINA STUMBLES, FED TALKS INTEREST RATE  
 NORMALIZATION**

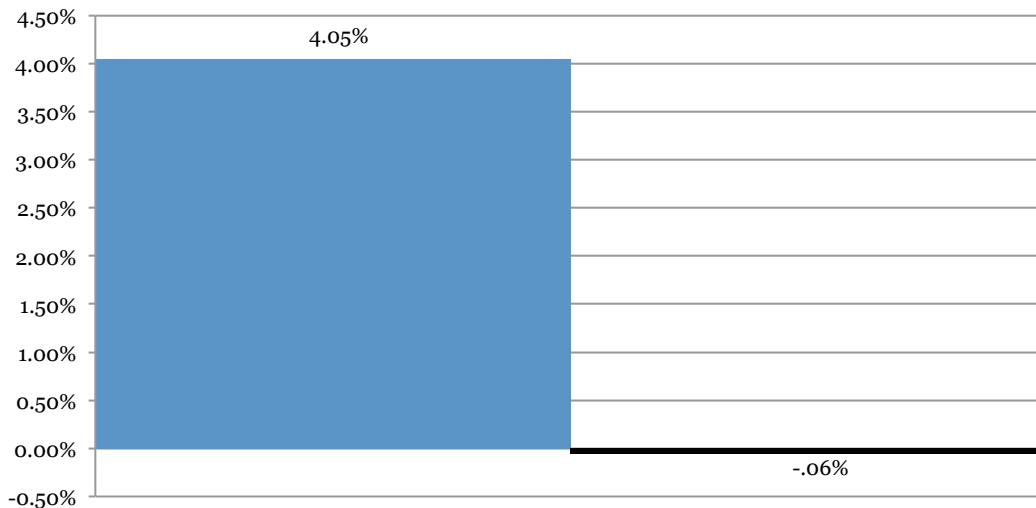
July 31, 2015 - October 31, 2015



The People's Bank of China surprised global markets by devaluing the Yuan three separate times in less than a week. The Shanghai Composite fell -26.70% from August 17 through August 26. In the U.S., the S&P 500 entered correction territory for the first time since 2011 returning -12.25% from July 20 through August 25 as the VIX soared 241% from July 17 to August 24. Crude oil fell below \$40 a barrel for the first time since June 2009, worsening the downward slide in the junk bond market.

**BREXIT**

June 1, 2016 - June 30, 2016



Leading into the U.K. referendum (BrExit) to leave the European Union, "risk-on" trade gained momentum. On June 23 the referendum passed, surprising most market pundits. Japan's Nikkei 225 Stock Market Index dropped -7.9%. Hong Kong's Hang Seng Index gave up nearly 3%. London's FTSE 100 Index fell as much as -6.7% before recovering to close down -3.2%. France's CAC 40 Index slid more than 8%. Global currencies experienced significant volatility as the British Pound sunk to its lowest level versus the U.S. Dollar in nearly 30 years. In the U.S., the Dow Jones Industrial Average gave up more than 600 points and the S&P 500 closed down -3.6%. Markets reconciled the impacts of BrExit and began to adjust portfolio risk levels.



*Permanent Portfolio's investment objectives, risks, charges and expenses must be considered carefully before investing. The statutory Prospectus and Summary Prospectus contain this and other important information. They may be obtained by calling (800) 531-5142 or by visiting [permanentportfoliofunds.com](http://permanentportfoliofunds.com). Read carefully before investing.*

Pacific Heights Asset Management, LLC became Permanent Portfolio's investment adviser on May 1, 2003. Prior to that, an investment adviser unrelated to Pacific Heights Asset Management, LLC managed the fund.

Alpha is the mean of the excess return of the manager over beta times benchmark. Alpha is a measure of risk (beta)-adjusted return. Beta is a measure of systematic risk or the sensitivity of a manager to movements in the benchmark. A beta of 1 implies you can expect the movement of a manager's return series to match that of the benchmark used to measure beta. Correlation is a statistical measure of how two securities move in relation to each other. Standard Deviation measures the average deviations of a return series from its mean and is often used as a measure of risk. A large deviation implies there have been large swings in the return series of the manager.

Shanghai Composite Index is a capitalization-weighted index. The index tracks the daily price performance of all A-shares and B-shares listed on the Shanghai Stock Exchange. The CBOE Volatility Index (VIX) is a key measure of market expectations of near-term volatility conveyed by S&P 500 Stock Index option prices. The Nikkei 225 Stock Average is a price-weighted index comprised of Japan's top 225 blue-chip companies traded on the Tokyo Stock Exchange. The Hang Seng Index is a market capitalization-weighted index of 40 of the largest companies that trade on the Hong Kong Exchange. The FTSE 100 Index is an index composed of the 100 largest companies listed on the London Stock Exchange. The CAC 40 Index is a benchmark French stock market index. It tracks the performance of 40 companies selected among the top 100 market capitalization and the most active listed equities traded on the New York Stock Exchange and Euronext Paris. The Dow Jones Industrial Average is a price-weighted average of 30 significant stocks traded on the NYSE (New York Stock Exchange) and the NASDAQ (National Association of Securities Dealers Automated Quotation System).

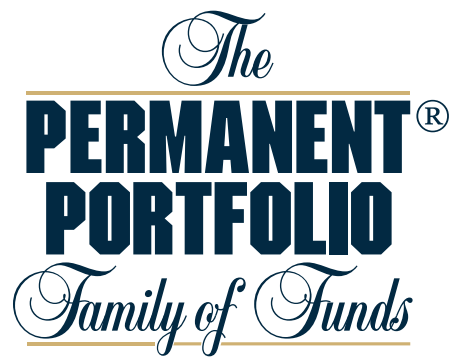
**Mutual fund investing involves risk; loss of principal is possible.**

**Permanent Portfolio invests in foreign securities, which will involve greater volatility, political, economic and currency risks, and differences in accounting methods. The fund will be affected by changes in the prices of gold, silver, Swiss franc assets and U.S. and foreign aggressive growth, real estate and natural resource stocks. The fund is non-diversified and thus may be able to invest more of its assets in fewer issuers and types of investments than a diversified fund. Investing a higher percentage of its assets in any one or a few issuers could increase the fund's risk of loss and its share price volatility. The fund may invest in smaller companies, which involve additional risks such as limited liquidity and greater volatility than larger companies.**

Pacific Heights Asset Management, LLC ("Pacific Heights") is the investment adviser to Permanent Portfolio Family of Funds, a Delaware statutory trust ("Fund"). The Fund is distributed by Quasar Distributors, LLC ("Quasar"), a member of FINRA. Quasar is not affiliated with Pacific Heights.

**Not FDIC Insured. No Bank Guarantee. May Lose Value.**

Permanent Portfolio®, The Permanent Portfolio Family of Funds®, A Fund for All Seasons® and The Permanent Portfolio Family of Funds logo are registered trademarks of Pacific Heights Asset Management, LLC. Copyright © 2018 Permanent Portfolio Family of Funds. All rights reserved.



**For more information –**

[permanentportfoliofunds.com](http://permanentportfoliofunds.com)